

Comprehensive 4 Days Course

FULL MOUTH REHABILITATION WITH INJECTABLE COMPOSITES



6 year follow-up of a full mouth reconstruction with injection moulding

8 - 11
JAN 2027
LIMITED TO
20 PAX ONLY

Featuring a full-day hands on component!

By the end of the 4 days, delegates should be able to:

- Confidently apply injection moulding across anterior and posterior cases
- Diagnose and manage tooth wear cases from start to finish
- Integrate occlusion, smile design, and adhesive workflows
- Deliver efficient, minimally invasive, biomimetic restorations
- Communicate effectively with patients and laboratories

SPEAKER PROFILE

DR KOSTAS KARAGIANNOPOULOS
BDS MCLINDENT



Dr Kostas is an experienced specialist prosthodontist, an academic and a researcher. He has been involved in academia since 2008 and is now a Clinical Lecturer at University College London. He leads Bio-Emulation in the UK, an international group of dentists united by the drive to preserve and restore dental tissues using nature as a guide. He co-founded Prosthworks delivering advanced private prosthodontic education since 2021. His areas of interests are fully guided composites, managing the worn dentition and naturally looking prostheses. He has trained over 1000 dentists on the injection moulding technique in 15 countries and he also works in specialist practice limited to Prosthodontics in the London area.

Day 1 INJECTION MOULDING

AIMS & OBJECTIVES

- UNDERSTAND AND DEMONSTRATE THE INJECTION MOULDING TECHNIQUE FOR COMPOSITE RESIN
- LEARN STEP-BY-STEP CLINICAL WORKFLOWS AND TREATMENT SEQUENCING
- EVALUATE MATERIALS, ALTERNATIVES, AND SUPPORTING EVIDENCE
- COMPARE ANALOGUE VS DIGITAL WORKFLOWS

COURSE CONTENT

- INDICATIONS AND APPLICATIONS OF INJECTION MOULDING
- WAX-UP DESIGN AND STENT FABRICATION
- DIGITAL AND ANALOGUE WORKFLOWS ("HYBRID MODEL")
- MOCK-UPS AND LAB COMMUNICATION
- TREATMENT PLANNING, PRICING, AND CONSENT
- POLISHING, MAINTENANCE, AND COMPLICATION MANAGEMENT
- REPAIRING FRACTURES AND DEFECTS

DAY 1: HANDS-ON

- PEG LATERAL INCISOR
- ANTERIOR RESIN VENEERS IN MONOSHADE AND LAYERING

KEY OUTCOME

- ABILITY TO DELIVER PREDICTABLE, EFFICIENT COMPOSITE RESTORATIONS WITH CONTROLLED MORPHOLOGY



Initial situation



Immediate post-op



5 year follow up

DAY 2 & 3 TOOTH WEAR

AIMS & OBJECTIVES

- UNDERSTAND FULL MANAGEMENT OF WORN DENTITION FROM ASSESSMENT TO MAINTENANCE
- APPLY OCCLUSAL CONCEPTS, INCLUDING THE DAHL PRINCIPLE
- DEVELOP COMMUNICATION STRATEGIES FOR SMILE DESIGN AND LAB WORK
- PLAN AND EXECUTE PREDICTABLE RESTORATIVE WORKFLOWS

COURSE CONTENT

ASSESSMENT & PLANNING

- NEW PATIENT CONSULTATION FOR TOOTH WEAR
- DIAGNOSIS AND RISK ASSESSMENT
- RESTORATIVE VS ORTHODONTIC DECISION-MAKING
- FACIALLY DRIVEN SMILE DESIGN

CLINICAL CONCEPTS

- OCCLUSAL RECORDS AND VERTICAL DIMENSION CHANGES
- EFFECTS OF TOOTH WEAR ON DENTITION
- HOW TO DETERMINE NEW OVD
- HOW TO DECIDE BETWEEN CR AND MIP
- DAHL CONCEPT: WHEN AND HOW TO APPLY
- INJECTION MOULDING IN WORN DENTITION
- TRANSITIONING TO CERAMICS

WORKFLOW & COMMUNICATION

- LAB PRESCRIPTIONS AND COMMUNICATION
- PATIENT COMMUNICATION AND CONSENT
- MAINTENANCE PROTOCOLS AND FAILURE MANAGEMENT

DAY 2 & 3: HANDS-ON

- DENTAL PHOTOGRAPHY FOR TOOTH WEAR
- SMILE DESIGN EXERCISES ON A TABLET WITH A STYLUS
- OCCLUSAL REGISTRATION AND DEPROGRAMMING USING A LUCIA JIG
- RESTORATION OF WORN ANTERIOR TEETH USING INJECTION MOULDING USING ALTERNATIVE STENT TECHNIQUE

KEY OUTCOME

- CONFIDENCE IN DIAGNOSING, PLANNING, AND RESTORING WORN DENTITIONS, INCLUDING OCCLUSAL MANAGEMENT



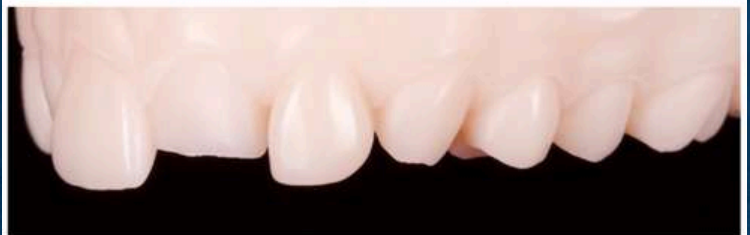
Photography for tooth wear



Facially generated treatment planning



Deprogramming and occlusal registration



The alternate tooth waxup model

DAY 4 POSTERIOR INJECTION MOULDING

AIMS & OBJECTIVES

- MANAGE POSTERIOR RESTORATIONS USING INJECTION MOULDING UNDER RUBBER DAM
- OPTIMISE WAX-UPS FOR POSTERIOR APPLICATIONS
- APPLY SEMI-INDIRECT TECHNIQUES (COMPOSITE TABLETOP ONLAYS)
- DELIVER PREDICTABLE POSTERIOR OUTCOMES

COURSE CONTENT

- POSTERIOR ISOLATION TECHNIQUES (RUBBER DAM)
- DIRECT INJECTION OF PREMOLARS USING CLEAR STENTS
- STAMP TECHNIQUE FOR MOLARS
- SEMI-INDIRECT COMPOSITE TABLETOP ONLAYS
- USE OF HEATED COMPOSITE WITH CLEAR STENTS

KEY OUTCOME

- ABILITY TO PERFORM PREDICTABLE POSTERIOR COMPOSITE RESTORATIONS USING ADVANCED INJECTION MOULDING TECHNIQUES

**EXCLUSIVELY
HANDS-ON DAY
WITH 4 PRACTICAL
EXERCISES ON
POSTERIOR**



Posterior injectable composites

Sign me right up!

SDA MEMBER \$2800 (\$3052 W/GST)

NON-SDA MEMBER \$3800 (\$4142 W/GST)

LIMITED TO 20 PAX ONLY

**PLUS
200-PAGE
E-BOOK***

DATE: 8 - 11 JANUARY 2027
9AM - 6PM

VENUE: SDA MULTI-PURPOSE
ROOM
CENTRIUM SQUARE
#13-12

CPD: TBC

PARTICIPANTS ARE EXPECTED TO BRING THEIR OWN CAMERAS, TABLETS AND LOUPES FOR THE PRACTICAL SESSIONS AS THESE WILL NOT BE PROVIDED.

***THE 200-PAGE E-BOOK WILL BE FORWARD TO ALL PARTICIPANTS WHEN IT IS READY.**

FOR ENQUIRIES



6258 9252



CDE@SDA.ORG.SG

REGISTRATION IS ON A FIRST-COME-FIRST-SERVED BASIS AND IS VALID UPON FULL PAYMENT. IF PAYMENT IS NOT RECEIVED WITHIN 1 WEEK OF REGISTRATION, THE SLOT WILL BE RELEASED TO OTHER PARTICIPANTS. THERE WILL BE NO REFUND FOR CANCELLATIONS OR ABSCENCE. SDA RESERVED THE RIGHT TO AMEND, CANCEL OR POSTPONE THE PROGRAMME, CHANGE THE EVENT VENUE, DATE OR TIME WITHOUT PRIOR NOTICE.

ORGANISED BY:

SUPPORTED BY:



GC

SCAN OR
[CLICK HERE](#)
TO REGISTER

